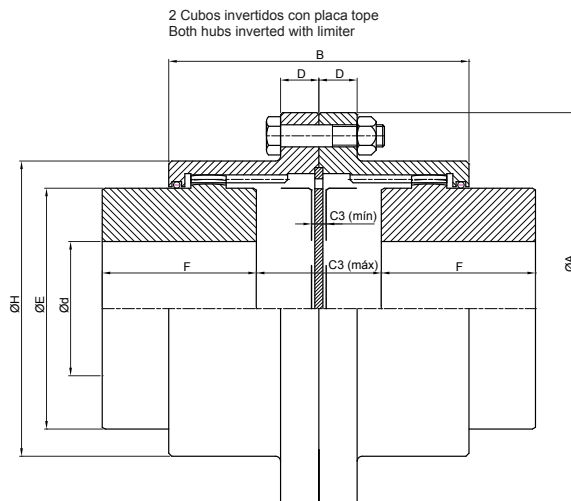
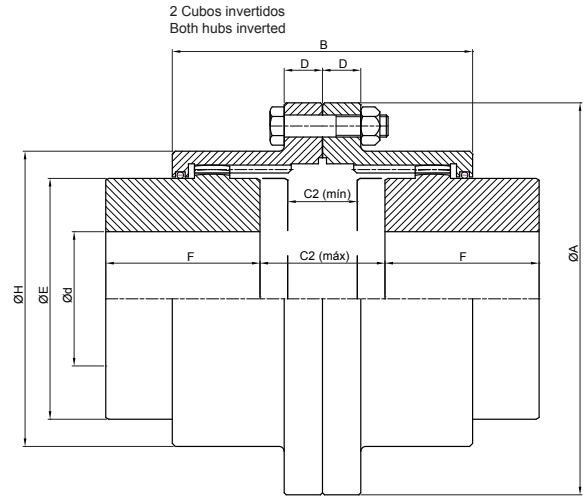
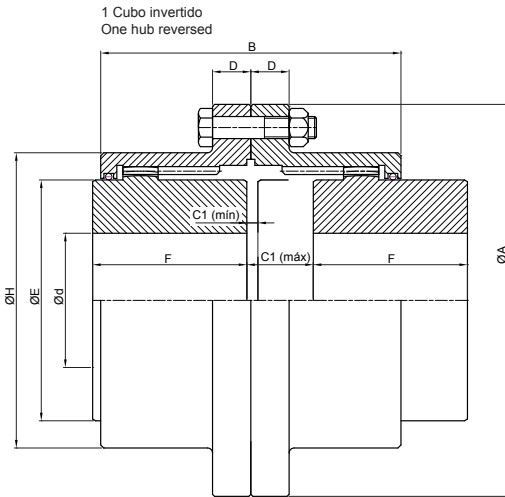




ACOPLAMENTOS DE ENGRENAGENS **POR** **Duplo Engrenamento. Cubos invertidos**
ACOPLAMIENTOS DE ENGRANAJES **ESP** **Doble compensador. Cubos invertidos**
GEAR COUPLINGS **ENG** **Double engagement. Hubs reversed**



TADF/BCI

Fabricados em:

- Aço SAE 1045 tratados termicamente a uma dureza de 240-260 Brinell.
- Aço SAE 4140 beneficiados e nitretados a uma dureza de 45-50 Rc.

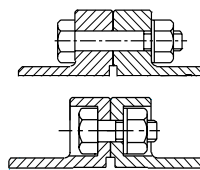
Fabricados en:

- Acero SAE 1045 tratados termicamente a uma dureza de 240-260 Brinell.
- Acero SAE 4140 bonificados y nitruados a 45-50 Rc.

Manufactured in:

- SAE 1045 steel, heat treated with a hardness Brinell 240-260.
- SAE 4140 steel, boron treated and nitrided to 45-50 Rc.

**Parafusos
Bulones
Bolts**



Os acoplamentos Tecnon podem ser fornecidos com parafusos expostos ou embutidos.

Los acoplamientos Tecnon pueden ser suministrados con bulones expuestos o bulones embutidos.

Couplings may be furnished with exposed bolts or shrouded bolts.

Tamanho Tamaño Size	Torque Nm	HP 100 rpm	rpm máx	Ød máx	A	B	D	F	H	E	C1		C2		C3		Peso Kg
											mín	máx	mín	máx	mín	máx	
101 1/4	1756	25	7250	47	130.0	83	16.0	43	83	64	5.0	8.0	10.0	13	6	13	5.2
101 1/2	2348	34	6500	60	152.4	95	19.0	49	98	79	6.0	11.0	13.5	19	8	19	8.5
102	4269	61	5600	73	177.8	120	19.0	62	125	100	5.0	15.0	16.5	27	8	27	13.3
102 1/2	7470	107	5000	92	212.7	148	22.0	77	149	122	5.0	25.0	25.0	45	10	45	25.0
103	12094	172	4400	105	239.7	178	22.0	91	174	140	5.0	28.5	27.0	52	10	52	37.0
103 1/2	18496	264	3900	123	279.4	206	27.0	106	200	162	8.5	38.5	41.0	71	11	71	59.0
104	30590	436	3600	146	317.5	234	27.0	120	234	192	9.0	43.0	46.0	80	16	80	86.0
104 1/2	41971	598	3200	171	346.1	262	27.0	135	263	214	11.0	53.0	56.0	98	18	98	121.0
105	56560	806	2900	183	388.9	298	38.0	153	293	239	11.0	66.0	69.0	124	18	124	171.0
105 1/2	73985	1054	2650	205	425.5	314	38.0	168	325	267	8.0	64.0	64.0	120	18	120	239.0
106	90345	1287	2450	230	457.2	336	25.0	188	356	295	12.0	62.0	66.0	116	21	116	267.0
107	135160	1926	2150	270	527.0	396	28.5	221	406	342	14.5	84.5	89.0	159	25	159	465.0

Gap de montagem: valores entre Cmin e Cmax / Gap de montaje: valores entre Cmin y Cmax / Montage Gap: values from Cmin -Cmax

