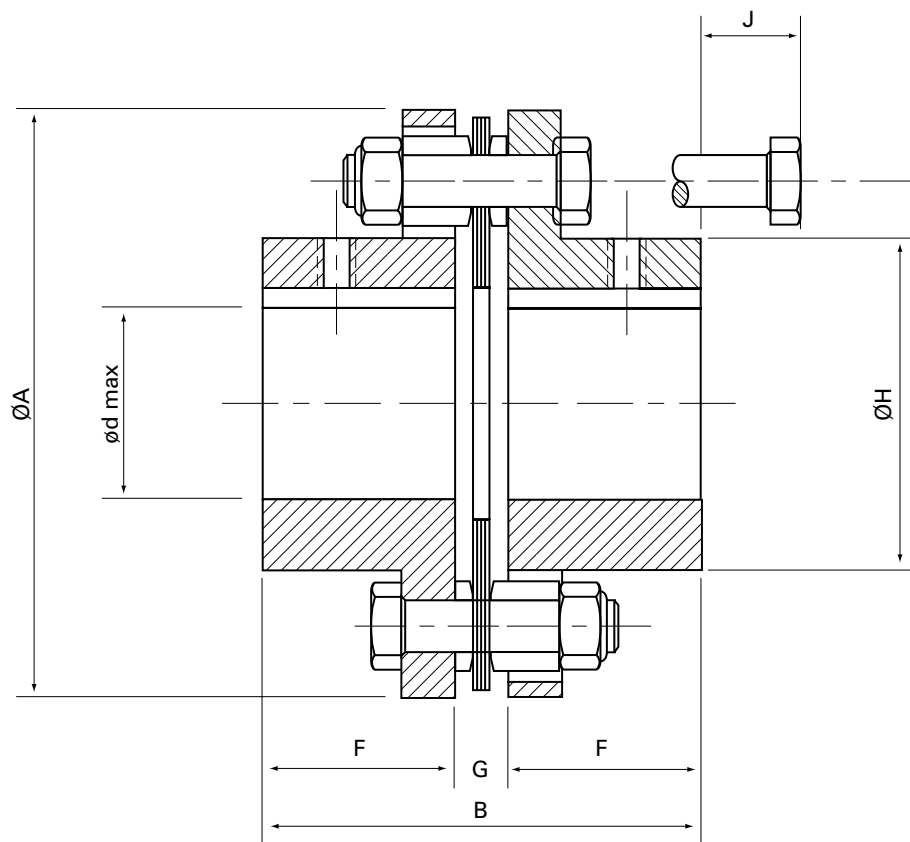


**ACOPLEMENTOS DE LÂMINAS** **POR** Série de 4 parafusos  
**ACOPLEMENTOS DE LÁMINAS** **ESP** Serie de 4 bulones  
**FLEXIBLE DISC COUPLINGS** **ENG** 4 bolts series

# TAR



Tamaño tamaño size	HP/100 rpm nominal	Torque Nm	rpm max AGMA 7	Ød max		A	B	G	F	H		J	Peso weight Kg
				AJ	AZ*					AJ	AZ		
5	0.48	34	8500	22	29	67	56.90	6.10	25.40	33	48	14	0.56
10	1.27	89	7500	32	41	81	57.65	6.85	25.40	46	60	14	0.89
15	2.50	175	6700	35	48	93	65.53	8.13	28.70	51	68	22	1.36
20	3.49	245	6200	41	54	104	75.70	8.64	33.53	61	79	20	1.85
25	6.03	423	5500	51	60	126	93.73	11.43	41.15	71	95	25	3.20
30	11.00	772	5000	61	73	143	107.44	11.94	47.75	84	108	28	4.93
35	18.00	1263	4400	73	95	168	128.27	13.97	57.15	105	133	25	7.80
40	29.00	2035	4000	83	102	194	142.24	15.24	63.50	118	153	33	11.65
45	48.00	3369	3700	95	118	214	173.99	21.59	76.20	137	171	20	16.00

\*AZ cubo lleno / AZ cubo lleno / AZ filled hub