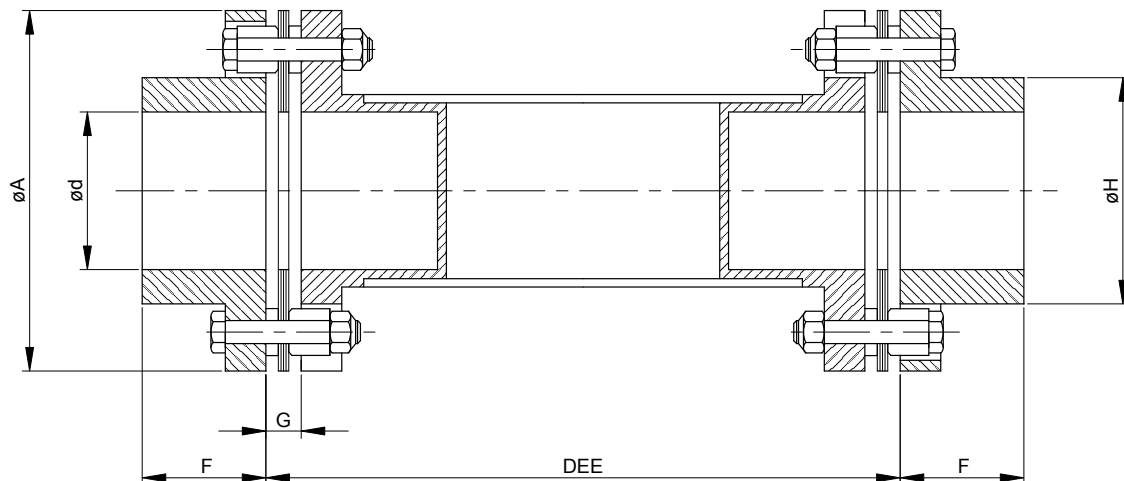




**ACOPLAMENTOS DE LÂMINAS** **POR** Eixo flutuante de Composite  
**ACOPLAMIENTOS DE LÁMINAS** **ESP** Eje Flotante Composite  
**FLEXIBLE DISC COUPLINGS** **ENG** Composite Floating Shaft



# TAEFC

Material del tubo	
G	Vidrio
R	Carbono/vidrio
B	Carbono
X, Z	Carbono A.D.

clase	Cubo	Tornillería
A	acero	acero
B	acero	ac. zincado
C	zincado	304SS
E	304SS	304SS
H	316SS	316SS

Tamaño Tamaño Size	HP/100 rpm	Torque Nm	Ød max (AJ)	Ød max (AZ)	DEE max	A	H	F	G
20C2G	3.49	245	41	54	2108	104	61	34	8.64
20C2R	3.49	245	41	54	2108	104	61	34	8.64
25C2G	6.03	423	51	61	2108	126	71	41	11.43
25C2R	6.03	423	51	61	2108	126	71	41	11.43
30C3R	11.00	772	61	73	3251	143	84	48	11.94
30C3B	11.00	772	61	73	3251	143	84	48	11.94
35C4R	18.00	1263	73	96	3708	168	105	57	13.97
35C4B	18.00	1263	73	96	3708	168	105	57	13.97
35C6R	18.00	1263	73	96	4546	168	105	57	13.97
35C6B	18.00	1263	73	96	4546	168	105	57	13.97
35C8R	18.00	1263	73	96	4978	168	105	57	13.97
35C8B	18.00	1263	73	96	4978	168	105	57	13.97
40C4R	29.00	2305	83	102	3708	194	118	64	15.24
40C4B	29.00	2305	83	102	3708	194	118	64	15.24
58C6R	54.00	3788	108	-	4546	229	158	83	14.22
58C6B	54.00	3788	108	-	4546	229	158	83	14.22
58C6X	54.00	3788	108	-	4623	229	158	83	14.22
58C8R	54.00	3788	108	-	4978	229	158	83	14.22
58C8B	54.00	3788	108	-	4978	229	158	83	14.22
58C10R	54.00	3788	108	-	5995	229	158	83	14.22
58C10B	54.00	3788	108	-	5995	229	158	83	14.22

Tabela de seleção  
 Tabla de selección rápida  
 Quick selection table

FS=2

1800 RPM			1500 RPM	
DEE	MAX HP	SIZE	MAX HP	DEE
1778	30	20-C2G	25	1956
	50	25-C2G	42	
2108	30	25-C2R	25	2108
	50	25-C2R	42	
2591	100	30-C3R	83	2845
2946	100	30-C3B	83	3226
2997	150	35-C4R	125	3277
	250	40-C4R	208	
3404	150	35-C4B	125	3708
	250	40-C4B	208	
1307	400	58-C6R	333	3937
4064	400	58-C6B	333	4445
4191	400	58-C6X	333	4597
4267	400	58-C6Z	333	4623
4826	250	40-C8B	208	4978
	400	58-C8B	333	
5236	250	40-C10R	208	5740
	400	58-C10R	333	
5334	250	40-C10B	208	5842
	400	58-C10B	333	
5766	250	40-C12B	208	5995
	400	58-C12B	333	